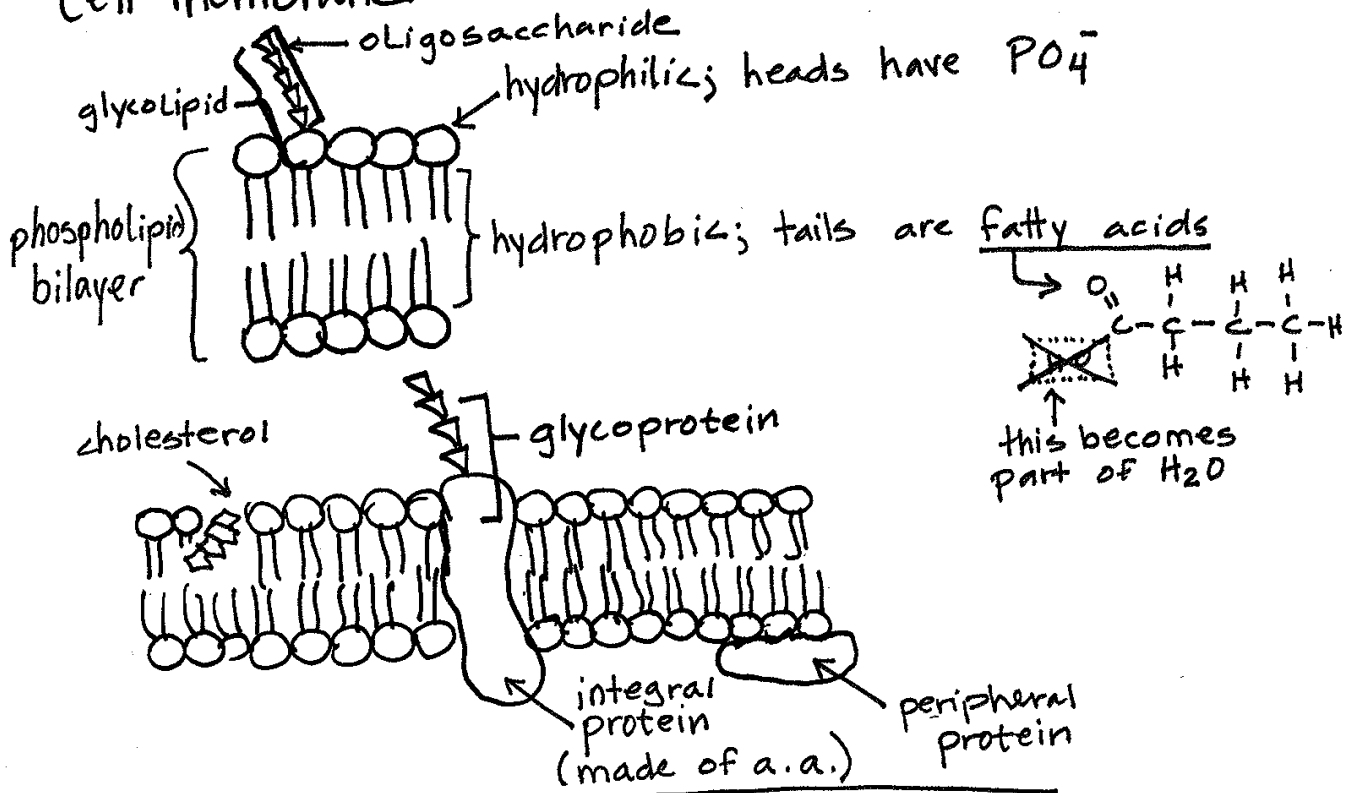


Cell membrane



- ① transport
 - ↳ channel PASSIVE
 - ↳ carrier ACTIVE
- ② adhesion
- ③ receptor
- ④ recognition ★
- ⑤ enzymes

"Bonds" you should know

- 1) polar covalent → e^- shared ^{unequally} between 2 atoms (i.e. O-H)
 - ↳ b/c one atom pulls the e^- more towards it
- 2) non-polar covalent → e^- shared ^{equally} between 2 atoms (i.e. C-H)
- 3) ionic → attraction between two ions
 - ↳ fully charged atoms b/c gained or lost e^-
 - ↳ $\ominus Cl^-$ (anion) $\oplus Na^+$ (cation)
- 4) hydrogen → attraction between a S^+ or S^- to something that is also polar or an ion.