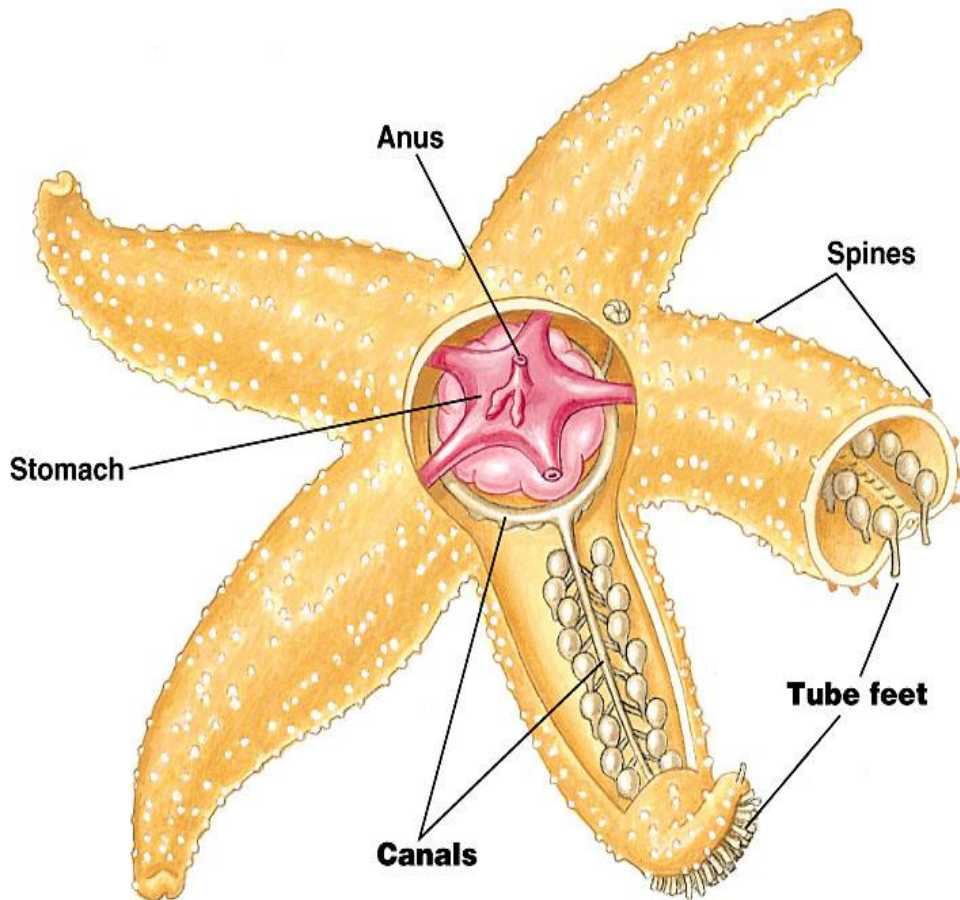


# Phylum: Echinodermata



# Phylum: Echinodermata



- Examples: sea stars, sand dollars, sea urchins
- Most are **radially symmetrical**
- Can have hard spines or plates embedded under the skin which are actually part of the hard internal skeleton (endoskeleton)
- Can regenerate whole arms
- Water vascular system that branches into tube feet that are important in locomotion, feeding and gas exchange